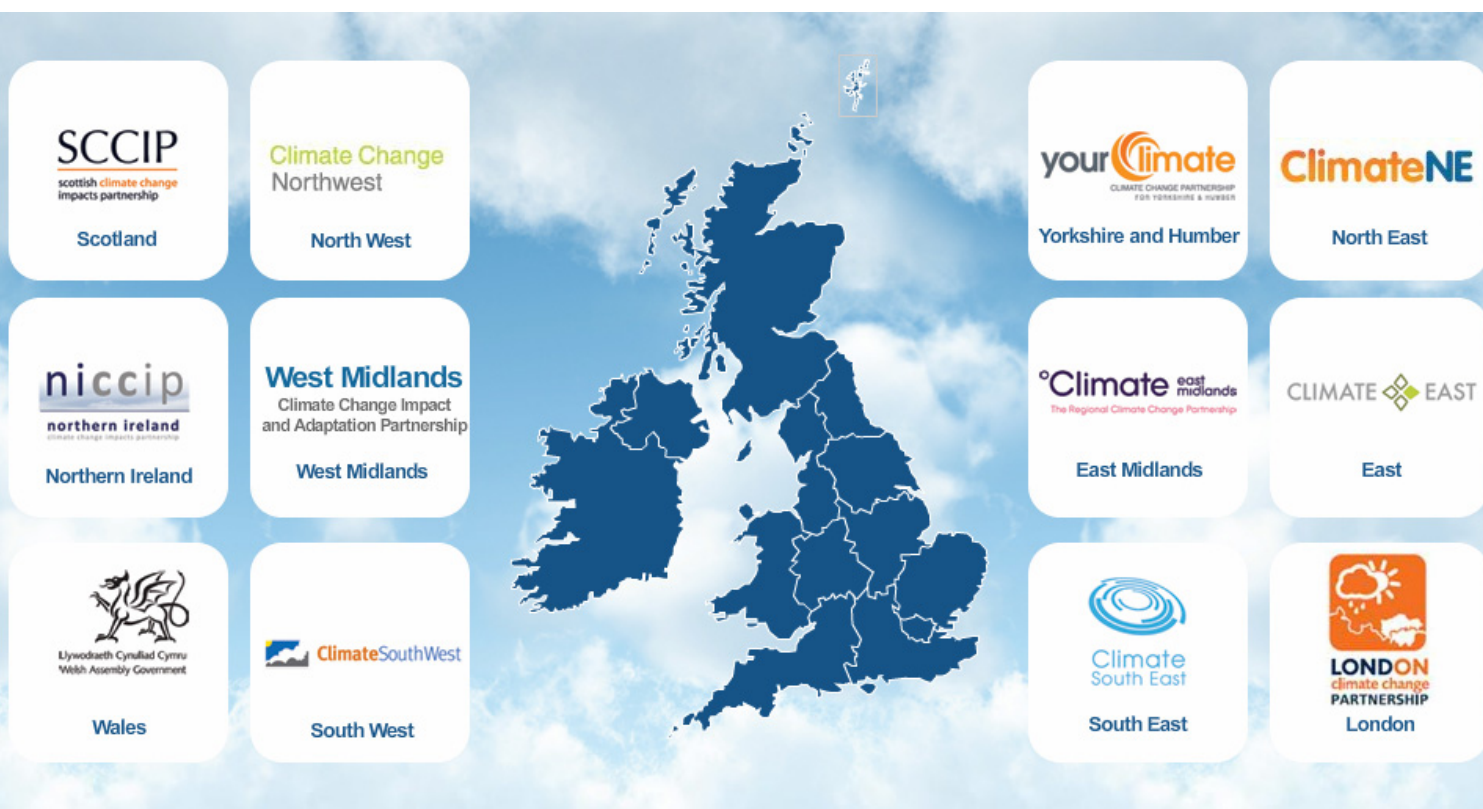


# An Adaptation Offer

Support to local government from Climate UK, the national network of climate change partnerships across England, Scotland, Wales and Northern Ireland.

Produced for the LG Group Adaptation Roundtable, 1st February 2011



## What is Climate UK?

Climate UK is the collective name for the climate change partnerships (CCPs) in the English regions, Scotland, Wales and Northern Ireland. We work collectively as a national network with the support of the UK Climate Impacts Programme (UKCIP) and the Environment Agency and are part funded by Government via Defra and the devolved administrations.

Each partnership is different in terms of its organisation, resources and priorities but all have a common interest in helping public and private sector organisations to adapt to a changing climate.

Supporting local government on adaptation is a key shared priority for us now and in the future.

## What is our offer to local government?

This leaflet describes in summary what kind of support you can get **here and now** from the CCPs in your own work on adaptation. You may be familiar with the CCP in your own area, but might find further valuable resources and even support from other CCPs too.

With the recent rapid changes in Government policy, the CCPs are increasingly collaborating and looking to share their resources more effectively across the country. And despite the demise of the regional agenda in England, the English CCPs are exploring new ways of working so that they can continue to provide a service to councils over the years ahead. You can access all of the CCP websites and online resources via our joint introductory webpage at: [www.climateuk.net](http://www.climateuk.net)

Change Partnership has delivered key support on adaptation to local authorities and business in the East of England over the last 7 years.

As the regional organisations evolve the partnership will join forces with Sustainability East at the end of March 2011 to become an independent enterprise providing debate, leadership and innovation on climate change and sustainable development. There will be a programme of support for local authorities building on the good work instigated by NI188, further work integrating the current UK Climate Change Risk Assessment and a role funded by CLG's *Climate Change Skills Fund* to begin the formation of a collaborative adaptation pathway for the area.

Please contact us at: [climateeast@eeda.org.uk](mailto:climateeast@eeda.org.uk)

local authorities in a collaborative 'Planning to Adapt' project since July 2008, with the support of UKCIP. A region-wide set of Local Climate Impact Profiles were developed and followed by comprehensive risk assessments, research into adaptive options, adaptation action plans and embedding adaptation into mainstream council processes. We continue to fund (via the RIEP) and coordinate a team of project officers who are hosted and managed by the local authorities. They share the workload and learning systematically and cascade the outputs and benefits to district councils and partner organisations.

We are happy to share our collective knowledge more widely, including tools, templates, guidance, risk assessments and plans, some of which are on our website, along with other adaptation resources. We may also be able to offer some more in depth or hands on support on a limited basis to enable you to benefit from our collective experience.

Please contact us for details via [www.climate-em.org.uk](http://www.climate-em.org.uk)



Over the last two years, the London Climate Change Partnership (LCCP) has worked with 22 of London's 33 Boroughs to develop a set of Local Climate Impact Profiles, which helped them to meet their National Indicator targets as well as becoming more aware of local risks from extreme weather.

In 2009 LCCP also produced a report, **Wild Weather Warning**: a London climate impacts profile, which looked at the way weather had impacted on London-wide service provision over the last 10 years. We continue to devote part of our work programme to support and enable local authorities to adapt to climate change.

We are currently consulting London Boroughs on how we can best support their adaptation activities through these times of change and welcome your feedback. LCCP is happy to share our collective knowledge and tools more widely. We may also be able to offer some more in depth support or involvement with projects. Please contact us via: [www.london.gov.uk/lccp](http://www.london.gov.uk/lccp)

ClimateNE has developed a strong evidence base that helps us to understand the scale of the challenge we face. This includes the award-winning **NE Adaptation Study**, looking at what the future climate is likely to be for North East England and how we will need to adapt; an analysis of Greenhouse Gas Emissions; and the economic implications and opportunities for the region.

For more information and to access these reports go to [www.climatenortheast.com](http://www.climatenortheast.com)



the implementation of **Rising to the Challenge** – A Climate Change Action Plan for England's Northwest.

Each member of the Partnership has a responsibility to deliver specific actions with the Climate Change Action Plan. This has included the delivery of a range of climate change adaptation support and advice to local authorities and their LSP partners through **CLASP** (the Climate Change Local Area Support Programme). On the website you can find materials from regular events focussing on adaptation, guidance, information and newsletters. Most recently 5 authorities have been supported through a comprehensive risk assessment of key service areas. The learning from this process and the template risk assessments developed will be available to download from February 2011. You can sign-up for event invitations and news of new resources via the website [www.clasp-nw.info](http://www.clasp-nw.info)



Working with local authorities to manage climate risk and improve resilience is one of the central priorities of Climate South East (CSE). Despite increasing pressure to reduce costs, councils will still need to deliver on climate change priorities. For more than ten years, CSE has provided a forum in which council officers and outside experts can share experience and information about incorporating adaptation into planning, business and community engagement, and conserving biodiversity. To support councils in meeting the requirements of NI 188, CSE has organised and facilitated officers' and LSP workshops on climate risk assessment, provided evidence to Members' task groups, and given awareness-raising presentations at council-led events.



Climate UK members meeting at the Met Office in Exeter

CSE is currently consulting with SE local authorities about how best to support their adaptation efforts in these times of shrinking budgets and changing priorities, and we welcome your input. For more information and to get in touch, please contact us via [www.climatesoutheast.org.uk](http://www.climatesoutheast.org.uk).



**ClimateSouthWest**

Actively working with councils on building

resilience to extreme weather and future climate change is a priority for Climate SouthWest (CSW). We currently provide dedicated support to our 16 upper tier councils through a RIEP funded local authority adaptation coordinator (until March 2011). This involves offering collective and 1-to-1 support to identify the impacts of extreme weather events; undertake comprehensive risk assessments; communicate climate change; and embed adaptation into wider service delivery and business continuity plans. The outputs of this project, including a range of good practice case studies, will be available on our website from April 2011.

Beyond this project, CSW will continue to offer direct support to the South West local authority network through events and presentations, facilitating peer support, and providing information and advice on adaptation. We are keen to share our knowledge and experience, and learn from others. We have a wealth of information on our dedicated local government webpage, including SW county level UKCP09 data, South West Planners Toolkit on Climate Change, **'Warming to the Idea: building resilience to extreme weather and climate change in the south west'** report and much more.

Visit [www.oursouthwest.com/climate](http://www.oursouthwest.com/climate) for more information or to contact us.

**West Midlands Climate Change Adaptation Partnership**  
Part of the Climate Change Office

The West Midlands Climate Change Adaptation Partnership (WMCCAP) is a widely

represented partnership with members from government, agencies and sectors including health, transport, water and emergency services, local authorities and universities.

The main work of the partnership has been focused on identifying the impact of a changing climate across the West Midlands and how this may affect, people, infrastructure and business. The main collaborative work of the partnership has centred around a programme of projects, funded by Defra over the last three years. These projects have aimed at identifying the risks associated with climate change and how to make the region more adapted by developing guidance to inform future approaches to planning, policy development, building design and community and commercial resilience.

Areas covered have been advice to SMEs and small businesses, health effects, biodiversity vulnerability, best practice in adaptation within construction projects such as sustainable schools and monitoring urban heat effects in the city of Birmingham.



**'Your Climate'**, the Climate Change Partnership for Yorkshire and Humber brings together local government,

government agencies, academia, the health service, business and the third sector to drive forward our work to tackle the causes and effects of climate change.

Our Adaptation Sub-Group supports practitioners to design and share best practice, improve performance and efficiency, and work across localities, sub-regions, and the region – whilst making links at a national level.

Over the last 12 months, with financial support from the Regional Improvement & Efficiency Partnership, all sub-regions have collaborated to produce Local Climate Impact Profiles (LCLIPs) and are now developing comprehensive risk assessments for each local area. Example action plans, guides and presentations are available on our website.

If you would like to get involved or have an adaptation query we would be pleased to hear from you, via [www.yourclimate.org](http://www.yourclimate.org)

The Northern Ireland Climate Change Impacts Partnership was established in 2007 and consists of representatives from central and local government, the business community, the voluntary sector and professional organisations. NICCIP's aim is to widen the understanding and knowledge of the impacts of climate change within Northern Ireland and the adaptation actions necessary to deal with it.

NICCIP works to increase the adaptive capacity of organisations and promotes the ownership of issues relating to climate change adaptation across relevant social, economic and environmental sectors. It provides members with information and links to regional, national and international activities on impacts and adaptation, and more broadly, it provides a forum for discussion and a link between organisations concerned with climate change adaptation issues.

The Scottish Climate Change Impacts Partnership aims to, 'increase the resilience of organisations and infrastructure to meet the challenges and opportunities presented by the impacts of climate change'.

SCCIP is working with a wide range of organisations to better understand how changes in climate may impact Scotland. Collaborative research, pilot projects and informal partnerships have been formed with representatives from across the public, private and voluntary sectors as SCCIP seeks to help organisations develop a planned and integrated approach to climate change adaptation. As part of this work SCCIP makes a wide range of training, advice and support available for all 32 Scottish Local Authorities. For more information please visit [www.sccip.org.uk](http://www.sccip.org.uk) or email [sccip@sniffer.org.uk](mailto:sccip@sniffer.org.uk)

Local government has a vital role to play in ensuring that Wales adapts to the impacts of climate change. The Welsh Assembly Government recognises this and is looking to work in partnership with the 22 Local Authorities who have all signed the **Welsh Commitment to Address Climate Change**.

The Climate Change Act provides a framework for reporting authorities (public bodies and statutory undertakers) to take account of the impacts of climate change and enables the Assembly Government to direct reporting bodies to prepare plans if this is not being done. We are currently under consultation with regard to the above powers; however there are no plans to issue Directions to reporting authorities prior to 2012. Instead the Assembly Government will work with public bodies in Wales and provide advice and guidance on climate risk assessment and planning. To support this process a Knowledge Transfer Officer, has joined the Assembly Government.

This guidance will also look to build upon the learning gained in the **Changing Climate Changing Places** project where four Welsh local authorities are piloting strategic and practical approaches to climate change adaptation. Project conclusions will be published this year which will help to develop the Assembly Government's statutory guidance, tools and resources for Local authorities.

## Contact details

Climate East	David Webb	01223 231 352	davidwebb@eeda.org.uk
Climate East Midlands	Mike Peverill	07854 284 588	mike.peverill@emcouncils.gov.uk
Climate NorthEast	Adrian Hilton	0191 497 8451	adrian.hilton@northeastcouncils.gov.uk
Climate South East	Kristen Guida	01483 501 360	kristen.guida@climatesoutheast.org.uk
London Climate Change Partnership	Juliette Daniels	0207 983 5781	juliette.daniels@london.gov.uk
North West Climate Change Partnership	Matt Ellis Dan Griffiths	01925 542 171 07980 713 287	matthew.ellis@environment-agency.gov.uk dan.griffiths@nwda.co.uk
Climate SouthWest	Alex Webb	01392 442 125	alex.webb@environment-agency.gov.uk
West Midlands Climate Change Adaptation Partnership	Julie Fay Shelly Beckett	07795 390 159 07802 335 164	julie.fay@environment-agency.gov.uk shelly.beckett@environment-agency.gov.uk
Your Climate (Yorkshire and Humber)	Jon Clubb	01924 331561	jon.clubb@lgyh.gov.uk
Northern Ireland Climate Change Impacts Partnership	Irene McGee	0131 557 2140	irene@sniffer.org.uk
Scottish Climate Change Impacts Partnership	Julian Holbrook	0131 557 2140	sccip@sniffer.org.uk
Welsh Assembly Government	Lucy Corfield	02920 823 615	lucy.corfield@wales.gsi.gov.uk